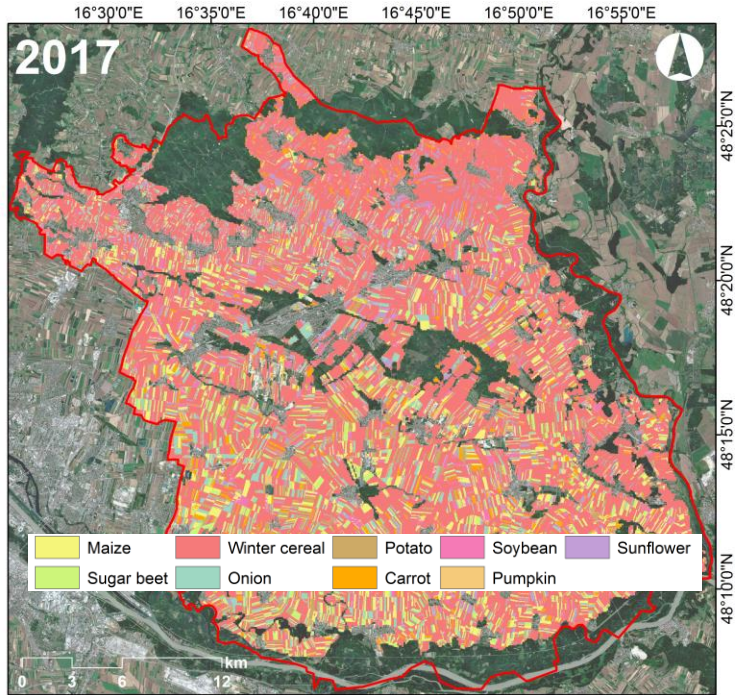


LANDWIRTSCHAFTLICHES MONITORING

BUNDESMINISTERIUM
FÜR NACHHALTIGKEIT
UND TOURISMUS



Impulsreferat *Sentinel Nutzbar Machen*

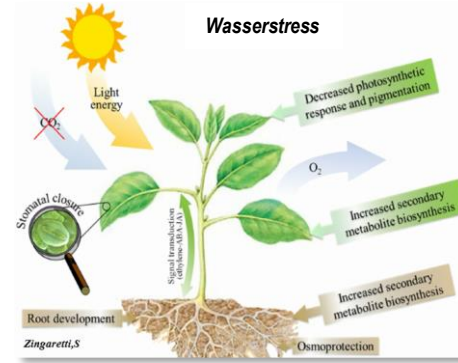
Clement ATZBERGER
BOKU, Wien, 4. April 2018



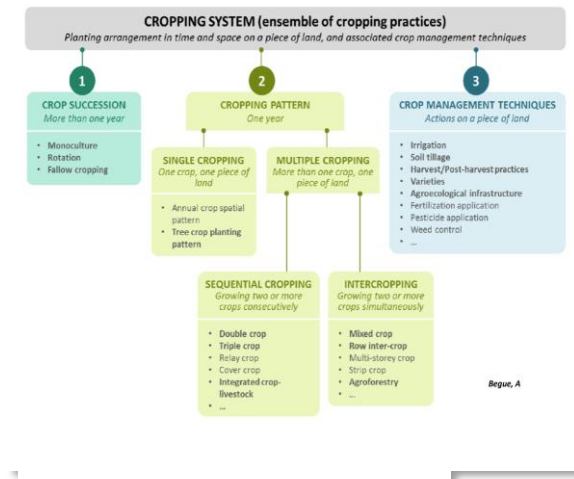
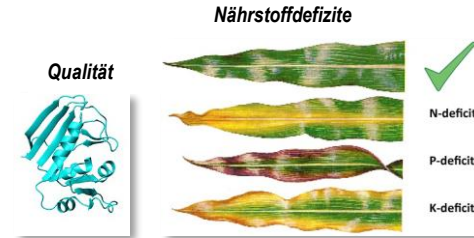
06.04.2018

AUFGABEN

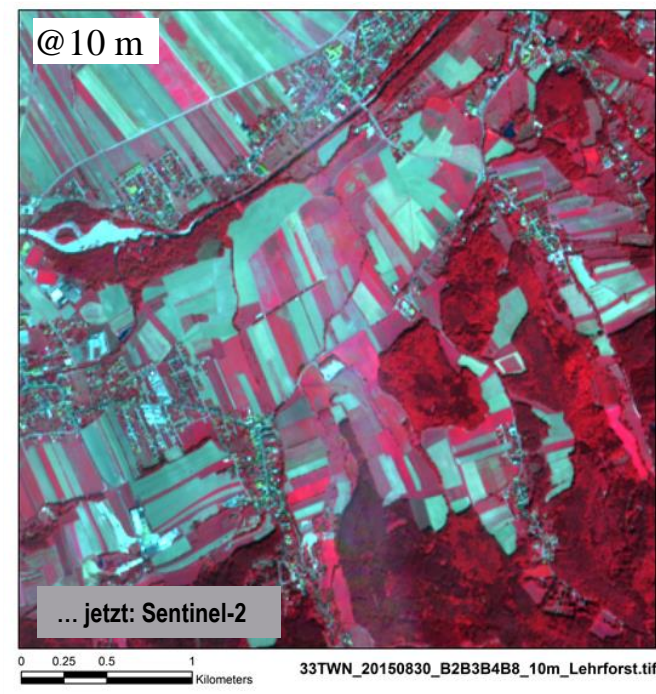
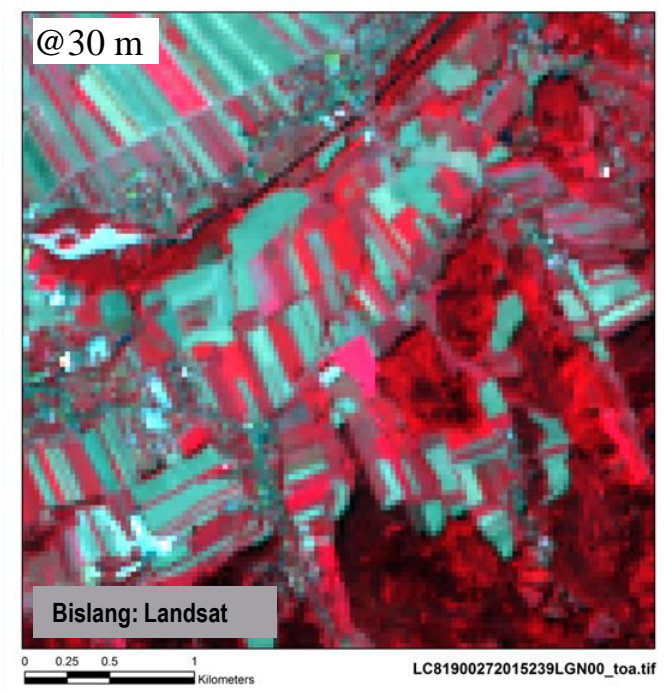
- + Erfassung von **Nährstoff-** und **Wasser-**Defiziten
- + Erkennung von **Krankheiten** und **Schädlingen**
- + Abschätzung der **Produktion** und **Qualität**
- + Bewirtschaftungs-**Intensität**
- + **Landnutzung**
- +



BUNDESMINISTERIUM
FÜR NACHHALTIGKEIT
UND TOURISMUS

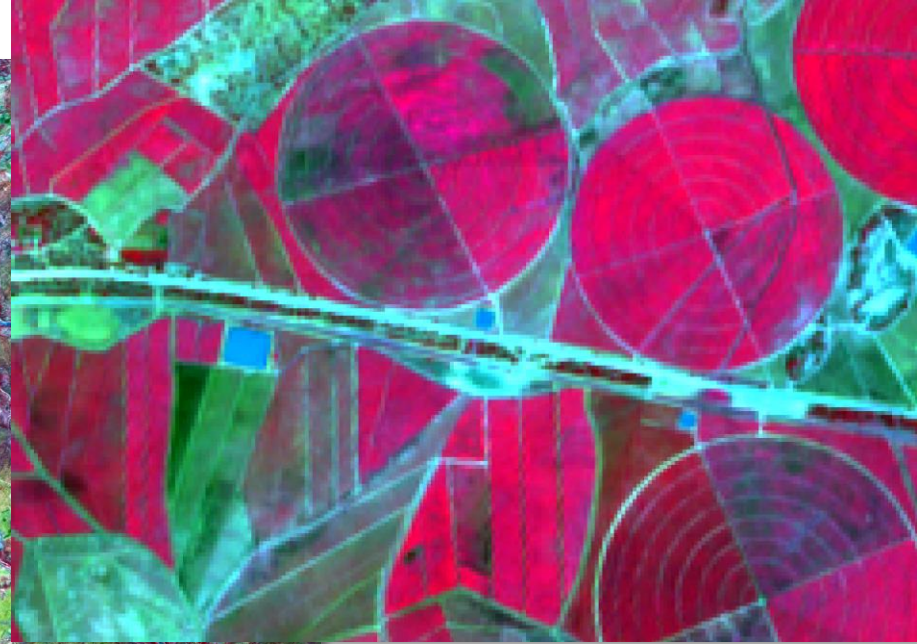
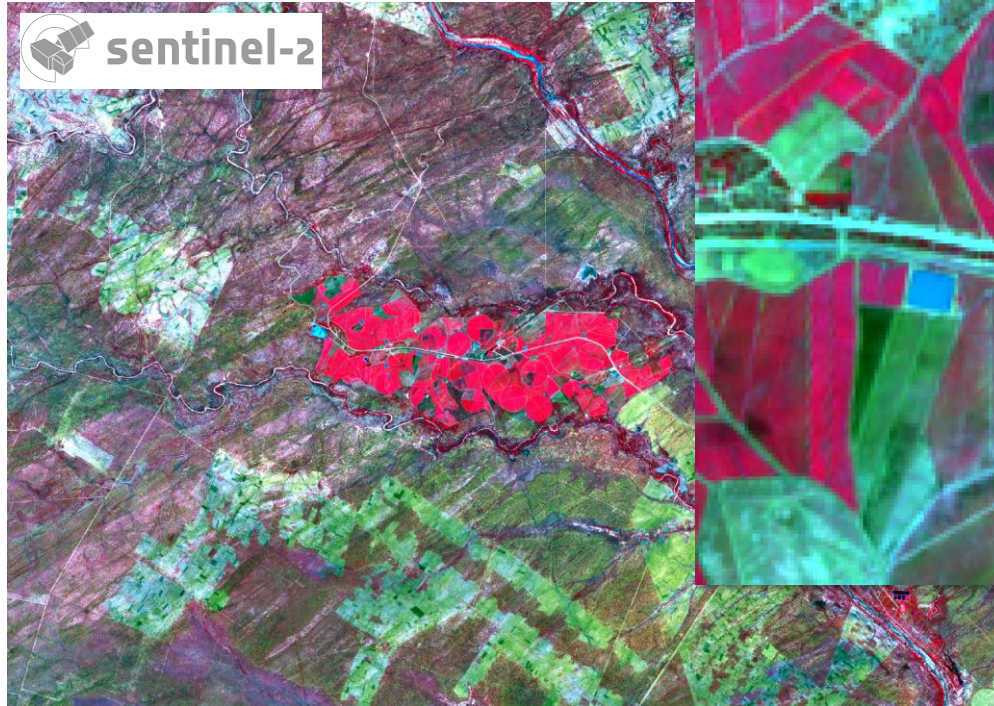


Detailreichtum & freie Verfügbarkeit



SENTINEL-2 SENSOREIGENSCHAFTEN

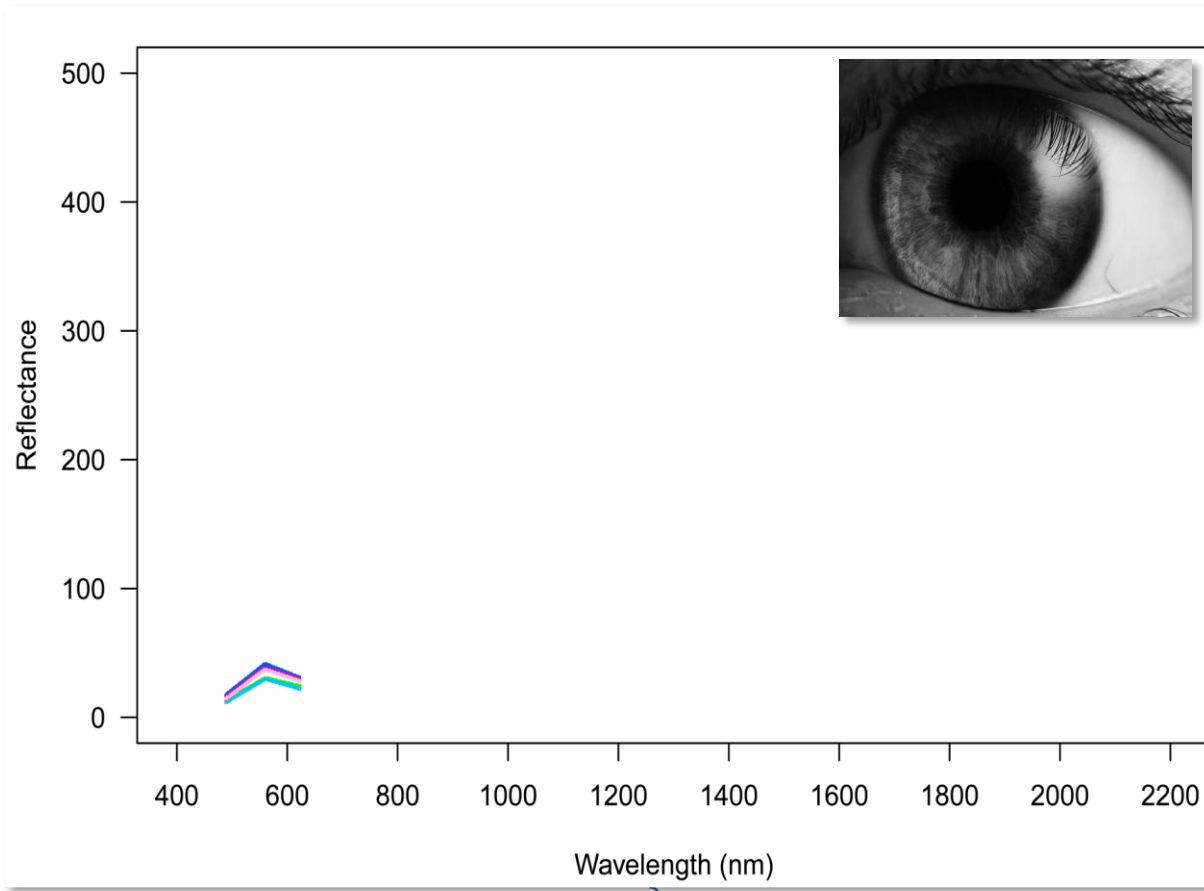
BUNDESMINISTERIUM
FÜR NACHHALTIGKEIT
UND TOURISMUS



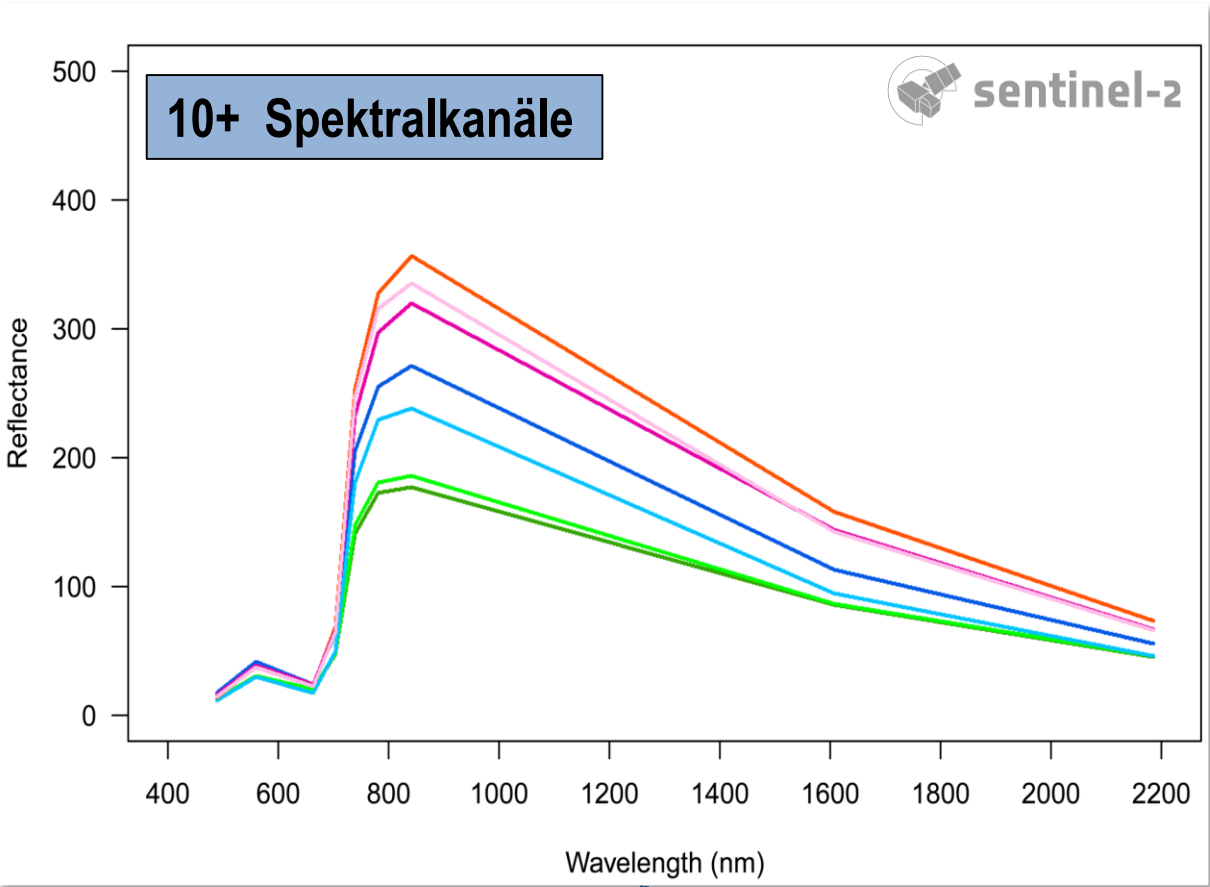
Detailreichtum & homogene Daten

SENTINEL-2 SENSOREIGENSCHAFTEN

BUNDESMINISTERIUM
FÜR NACHHALTIGKEIT
UND TOURISMUS



SENTINEL-2 SENSOREIGENSCHAFTEN



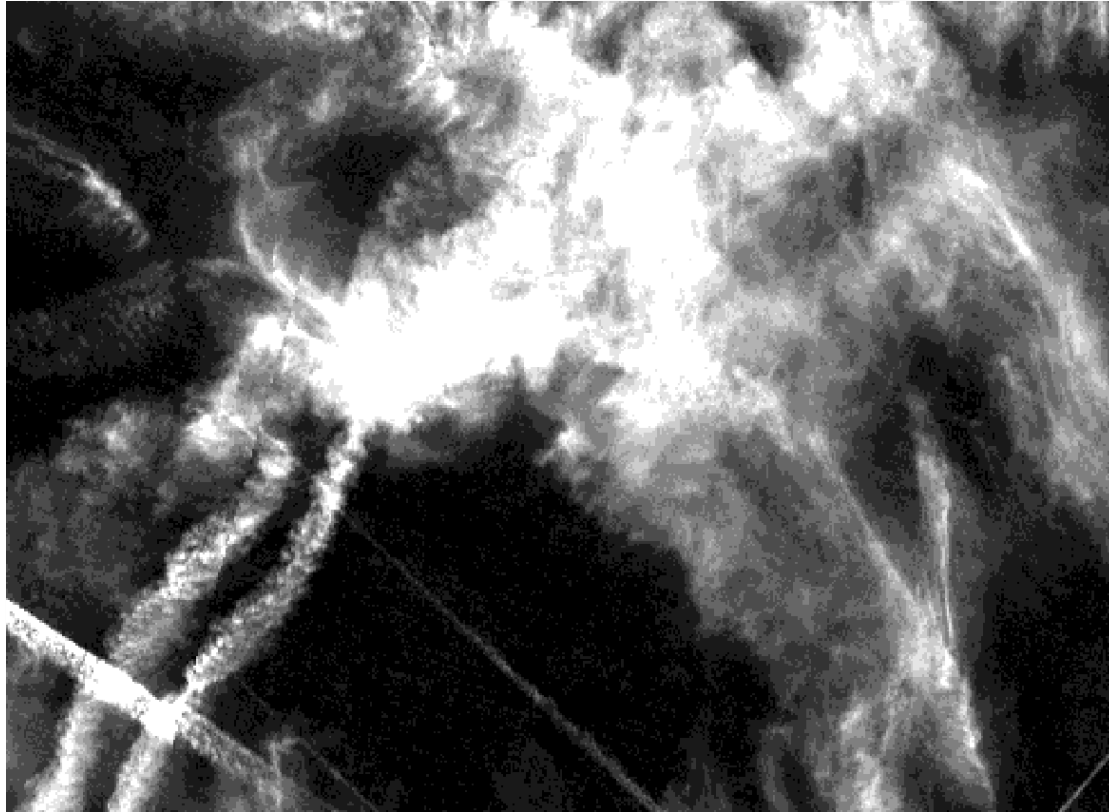
SENTINEL-2 SENSOREIGENSCHAFTEN

BUNDESMINISTERIUM
FÜR NACHHALTIGKEIT
UND TOURISMUS



Vienna

B02: 30/08/2015



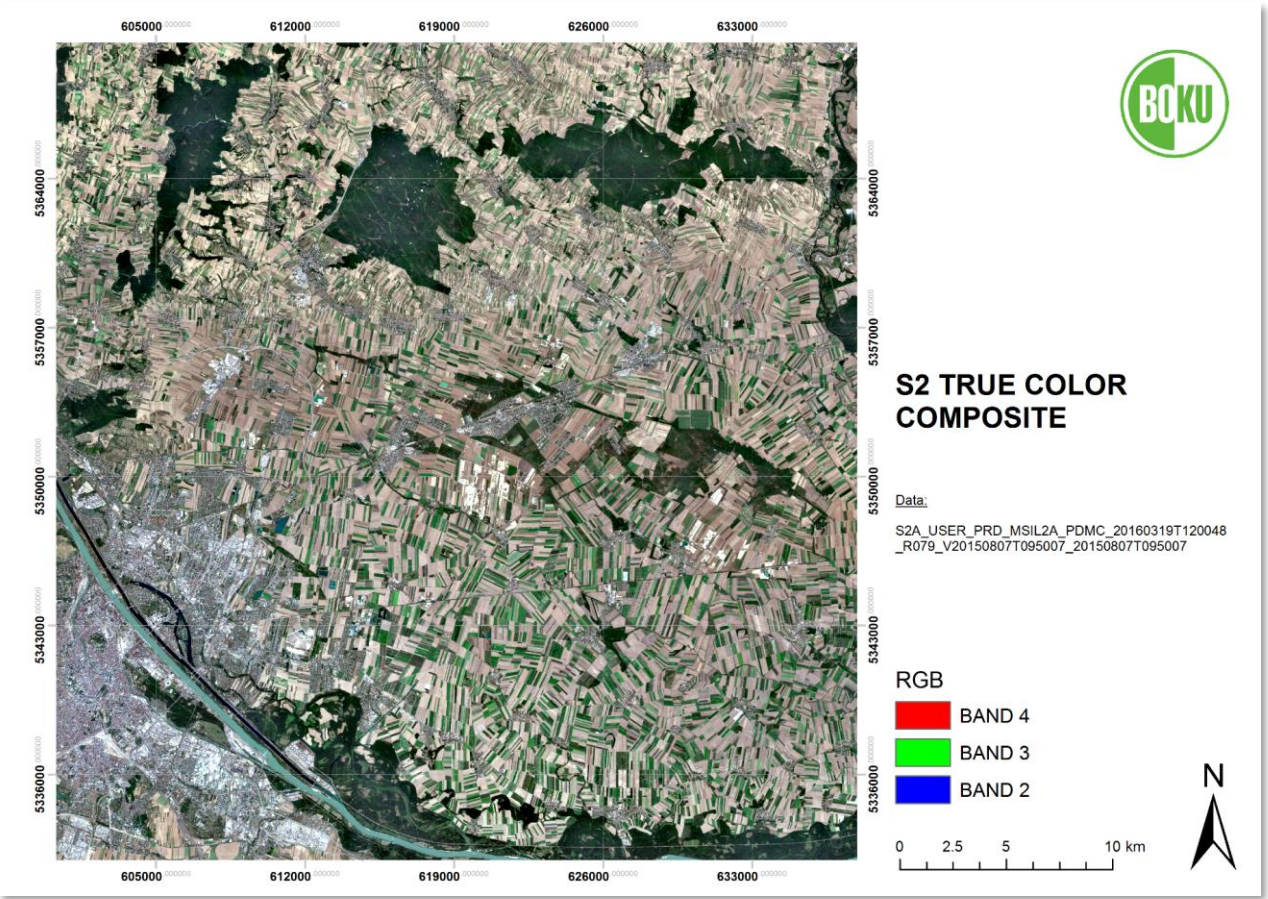
Vienna

B10: 30/08/2015

Exzellente Wolkendetektion

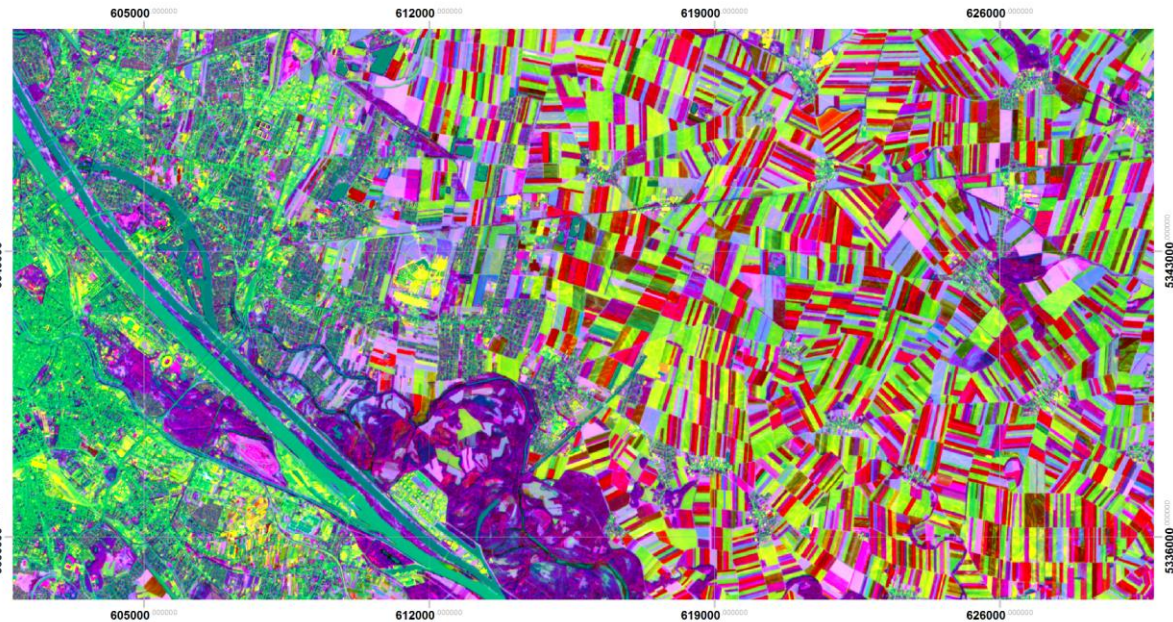
SENTINEL-2 SENSOREIGENSCHAFTEN

BUNDESMINISTERIUM
FÜR NACHHALTIGKEIT
UND TOURISMUS



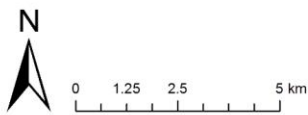
Phantastische Qualität

SENTINEL-2 SENSOREIGENSCHAFTEN



Hauptkomponenten: 1-2-3
aus drei Aufnahmen

SENTINEL2



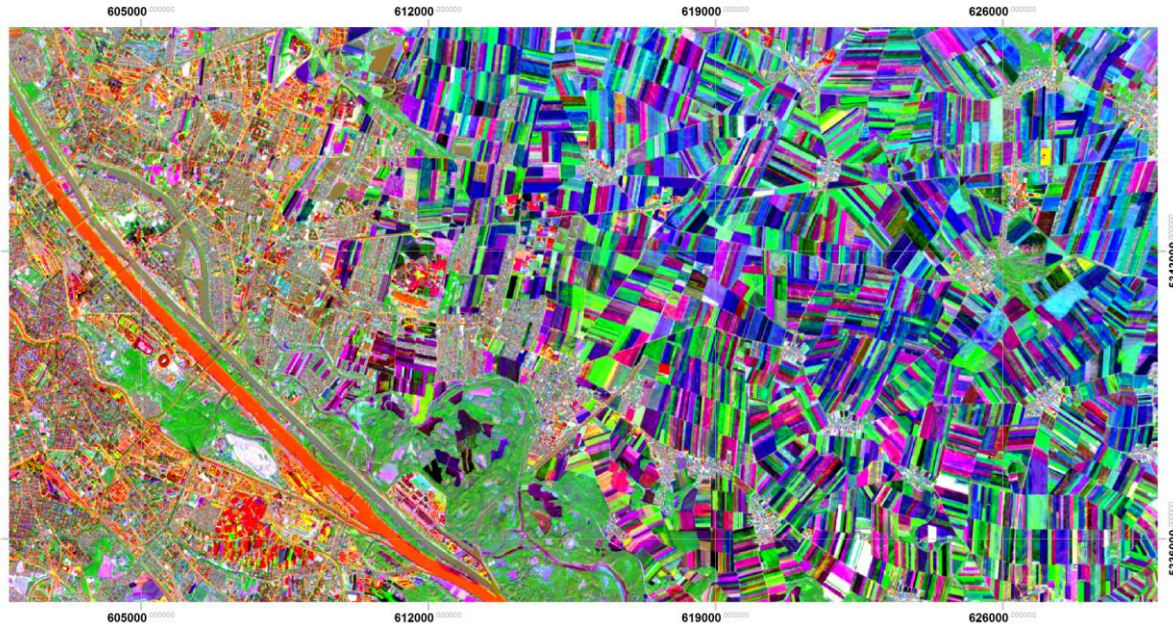
- RGB
- PC 1 (Red)
 - PC 2 (Green)
 - PC 3 (Blue)

Data:
S2A_USER_PRD_MSIL2A_PDMC_20160319T120048_R079_V20150807T095007_20150807T095007
S2A_USER_PRD_MSIL2A_PDMC_20160206T202544_R122_V20160206T100203_20160206T100203
S2A_USER_PRD_MSIL2A_PDMC_20160506T205958_R122_V20160506T100527_20160506T100527



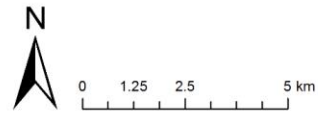
Hoch-informative Daten

SENTINEL-2 SENSOREIGENSCHAFTEN



Hauptkomponenten: 4-5-6
aus drei Aufnahmen

SENTINEL2



- RGB
- PC 4 (Red)
 - PC 5 (Green)
 - PC 6 (Blue)

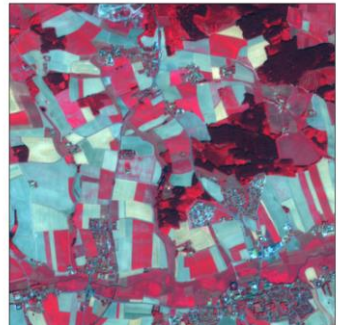
Data:
S2A_USER_PRD_MSIL2A_PDMC_20160319T120048_R079_V20150807T095007_20150807T095007
S2A_USER_PRD_MSIL2A_PDMC_20160206T202544_R122_V20160206T100203_20160206T100203
S2A_USER_PRD_MSIL2A_PDMC_20160506T205958_R122_V20160506T100527_20160506T100527



Hoch-informative Daten

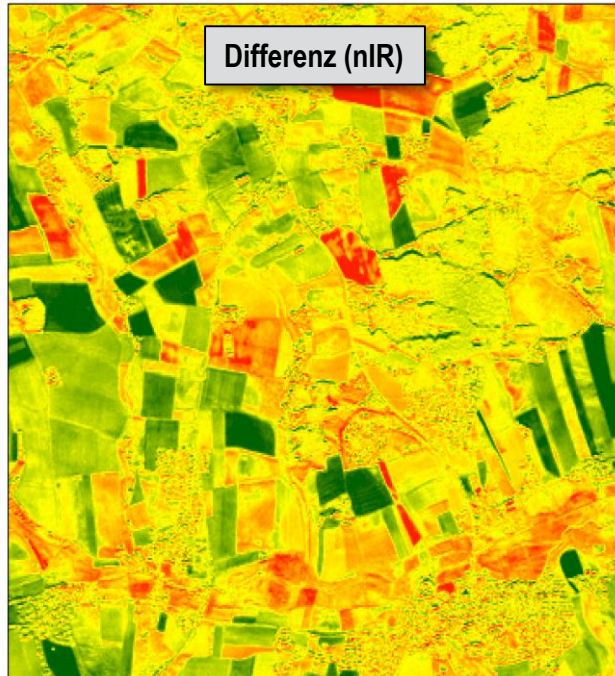
SENTINEL-2 SENSOREIGENSCHAFTEN

BUNDESMINISTERIUM
FÜR NACHHALTIGKEIT
UND TOURISMUS



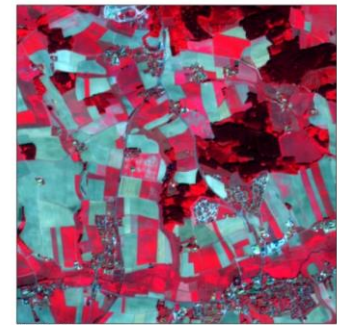
T3ZUQU_20150813_B2B3B4B8_10m_Altoetting.tif
RGB
Red: Band_4
Green: Band_3
Blue: Band_2

13 August



Differenz (nIR)

T3ZUQU_20150813_20150823_Diff_NIR.tif
Value
High : 463
Low : -182



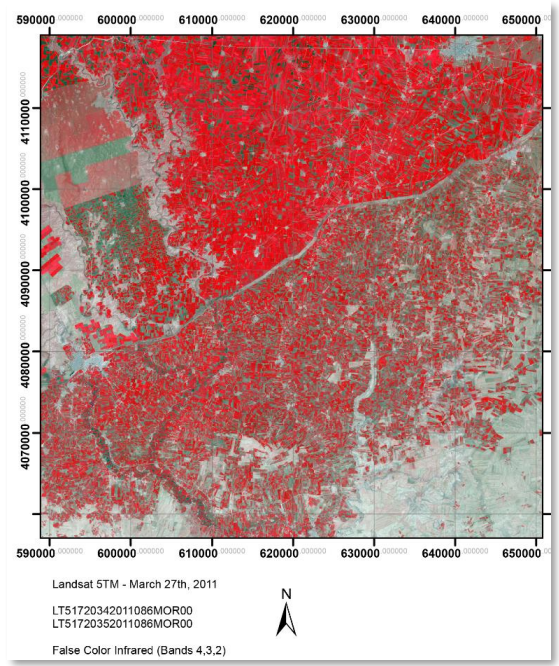
T3ZUQU_20150823_B2B3B4B8_10m_Altoetting.tif
RGB
Red: Band_4
Green: Band_3
Blue: Band_2

23 August

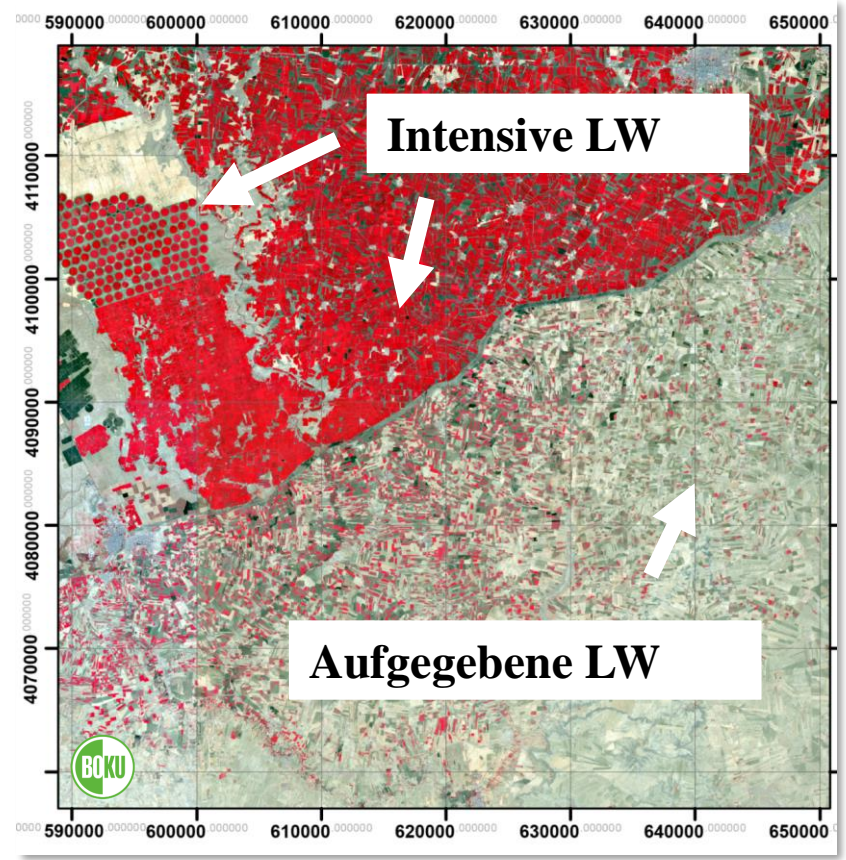
Dynamik der Landschaft

SENTINEL-2 KLASSISCHE ANWENDUNGEN

BUNDESMINISTERIUM
FÜR NACHHALTIGKEIT
UND TOURISMUS



Vor Kriegsausbruch
(März 2011)



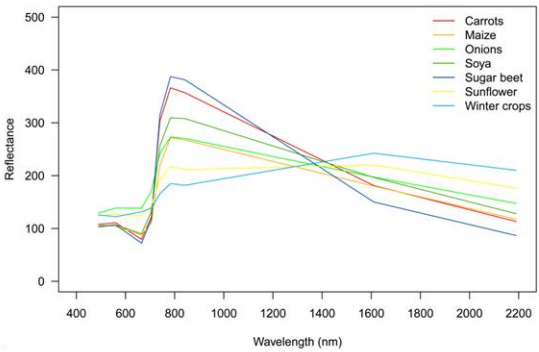
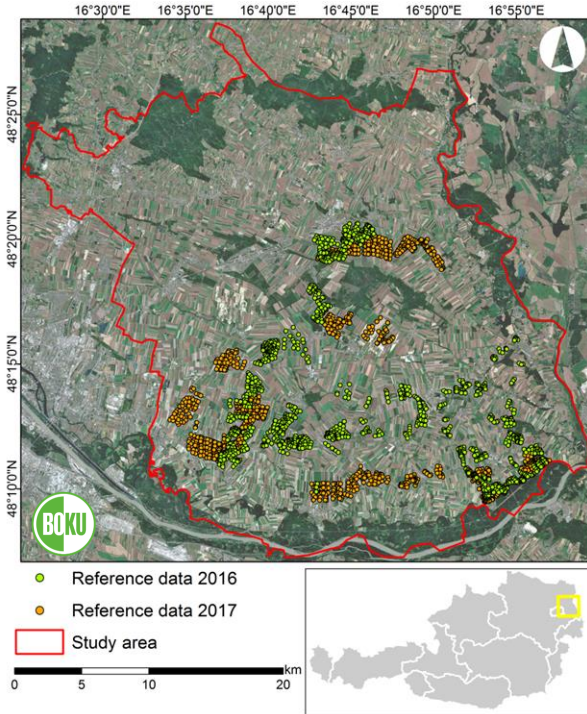
Situation
April 2016



Aufklärung

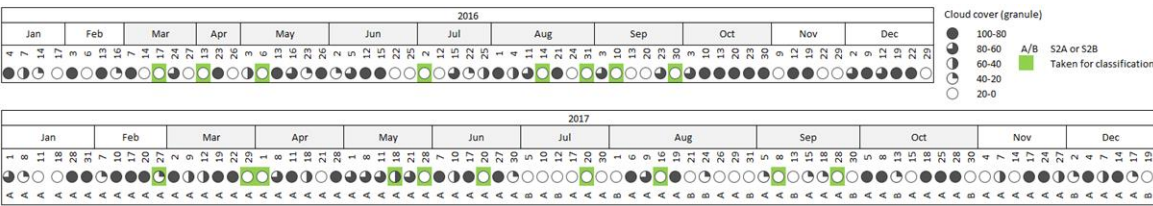
SENTINEL-2 KLASSISCHE ANWENDUNGEN

BUNDESMINISTERIUM
FÜR NACHHALTIGKEIT
UND TOURISMUS

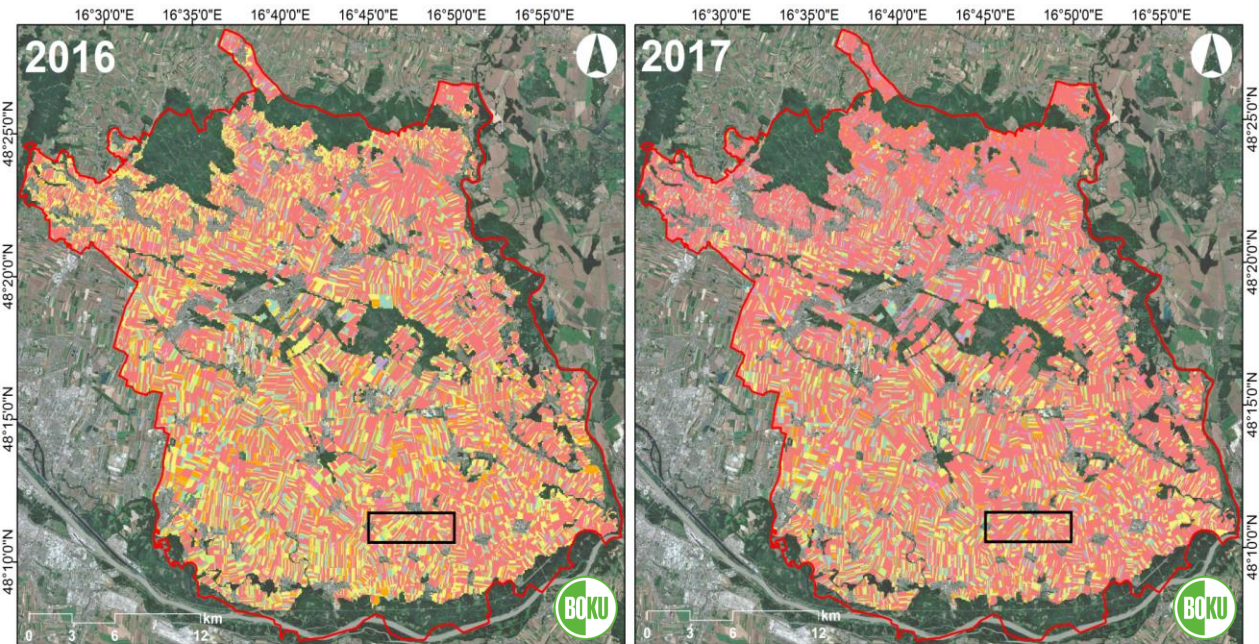


Flächenerfassung & Produktionsabschätzung

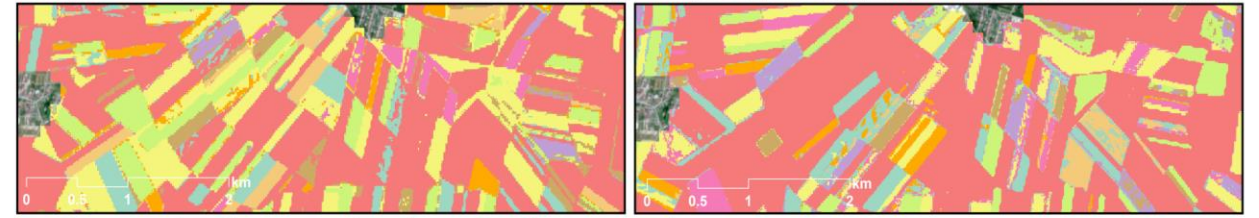
Crop Type	Reference 2016	Reference 2017
Carrot	102	73
Maize	171	222
Onion	114	117
Potato	108	99
Pumpkin	63	51
Soybean	84	120
Sugar beet	171	186
Sunflower	63	45
Winter cereal	354	276



SENTINEL-2 KLASSISCHE ANWENDUNGEN



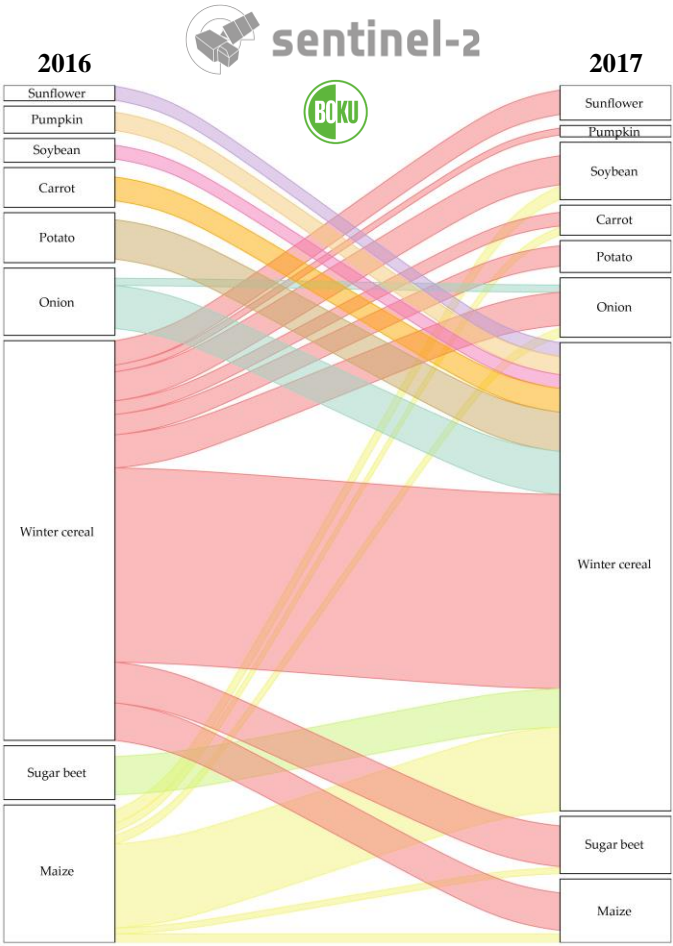
Flächenerfassung & Produktionsabschätzung



- Maize
- Winter cereal
- Potato
- Soybean
- Sunflower
- Sugar beet
- Onion
- Carrot
- Pumpkin
- Study area



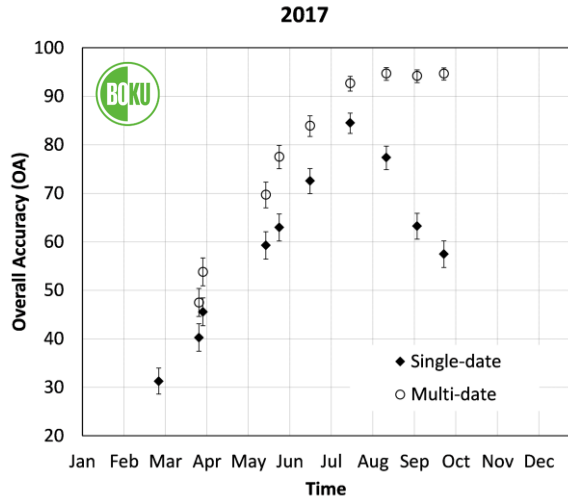
SENTINEL-2 KLASSISCHE ANWENDUNGEN



Flächen, Fruchtfolge & Compliance

Crop Type	2016 (ha)	2017 (ha)	2016 (%)	2017 (%)
Carrot	3371.04	2550.07	0.05	0.04
Maize	11657.7	5383.43	0.17	0.08
Onion	5702.45	5038.9	0.08	0.07
Potato	4240.5	2698.84	0.06	0.04
Pumpkin	2292.77	968.04	0.03	0.01
Soybean	2013.27	4880.51	0.03	0.07
Sugar beet	4572.97	4861.83	0.07	0.07
Sunflower	1299.52	2942.62	0.02	0.04
Winter cereal	33886.21	39712.19	0.49	0.58

SENTINEL-2 KLASSISCHE ANWENDUNGEN

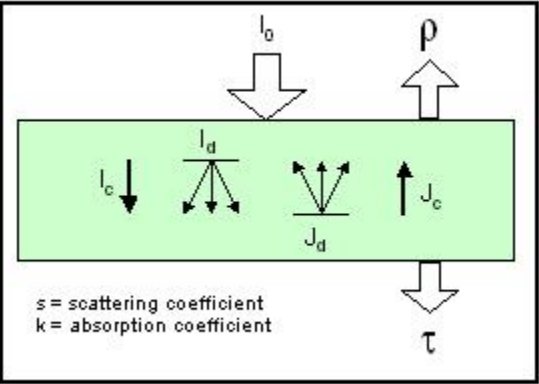


Genauigkeiten ... & Wichtigkeit von multi-temporalen Aufnahmen

2016	Carrot	Maize	Onion	Potato	Pumpkin	Soybean	Sugar beet	Sunflower	Winter cereal	User's accuracy
Carrot	95	1	0	1	0	0	0	0	0	0.979
Maize	3	160	0	2	1	3	0	1	0	0.941
Onion	2	6	110	1	1	0	0	3	2	0.880
Potato	2	0	0	98	0	0	2	3	0	0.933
Pumpkin	0	1	0	0	61	0	0	1	0	0.968
Soybean	0	0	0	1	0	78	0	0	0	0.987
Sugar beet	0	3	0	4	0	3	169	0	0	0.944
Sunflower	0	0	0	0	0	0	0	55	0	1.000
Winter cereal	0	0	4	1	0	0	0	0	352	0.986
Producer's accuracy	0.931	0.936	0.965	0.907	0.968	0.929	0.988	0.873	0.994	0.988

2017	Carrot	Maize	Onion	Potato	Pumpkin	Soybean	Sugar beet	Sunflower	Winter cereal	User's accuracy
Carrot	63	1	0	0	0	2	0	0	0	0.955
Maize	1	210	1	0	0	18	0	0	0	0.913
Onion	0	5	116	1	0	3	0	0	0	0.928
Potato	2	1	0	97	1	0	2	1	0	0.933
Pumpkin	1	0	0	0	49	0	0	1	0	0.961
Soybean	4	2	0	0	0	94	5	1	0	0.887
Sugar beet	0	3	0	1	0	2	178	0	0	0.967
Sunflower	1	0	0	0	1	1	1	42	0	0.913
Winter cereal	1	0	0	0	0	0	0	0	276	0.996
Producer's accuracy	0.863	0.946	0.991	0.980	0.961	0.783	0.957	0.933	1.000	0.946

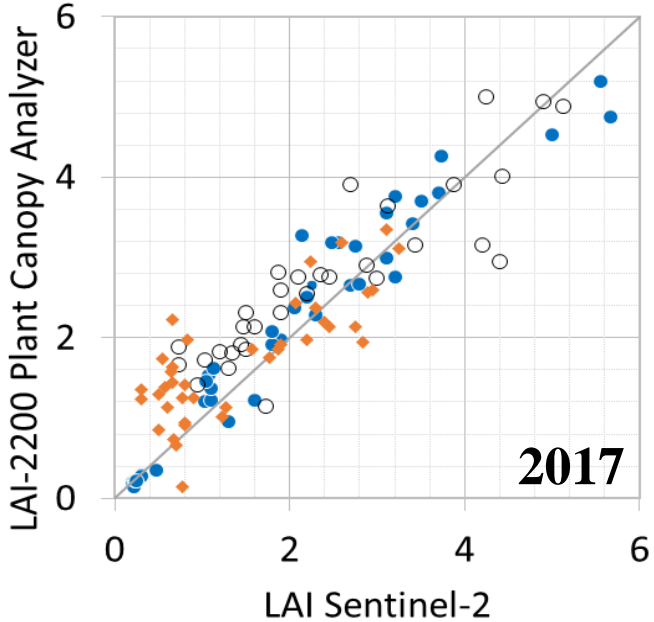
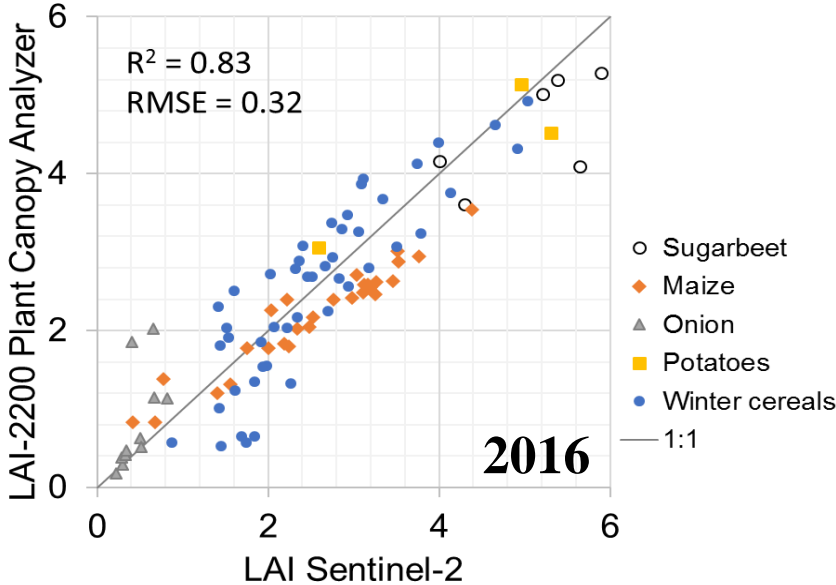
SENTINEL-2 BIOMASSE UND BLATTFLÄCHE



Strahlungstransfermodellierung

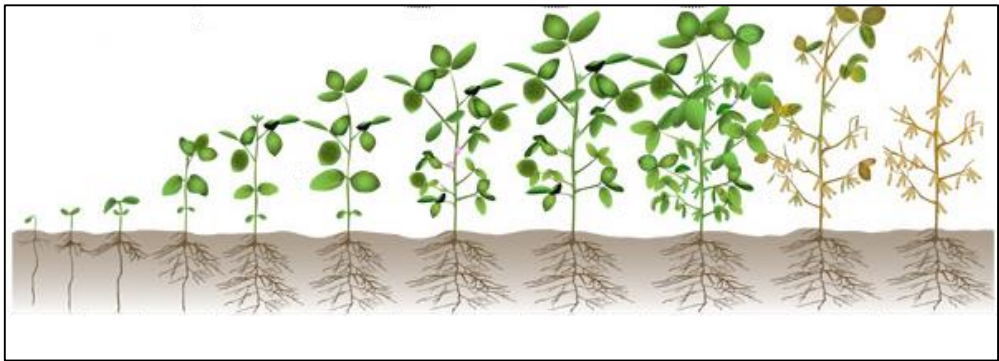
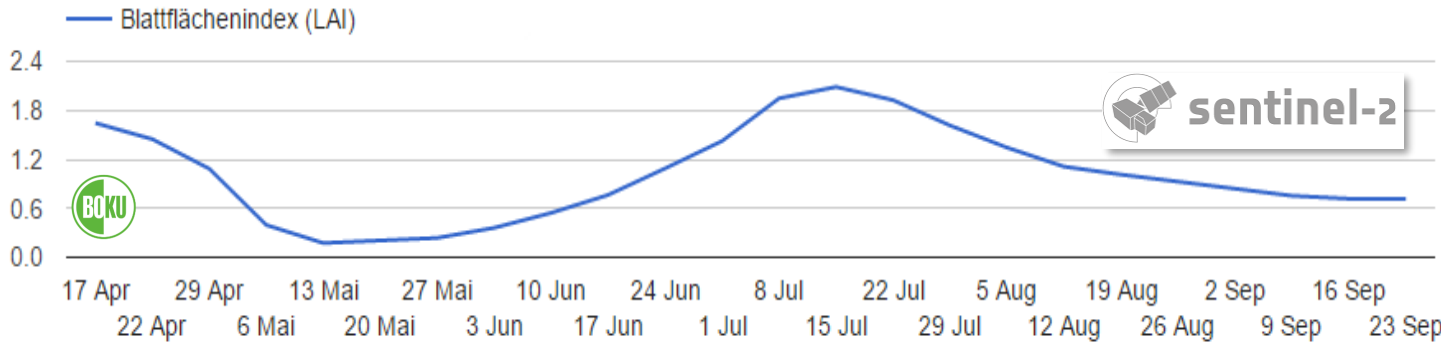
Erfassung der Pflanzenparameter

SENTINEL-2 BIOMASSE UND BLATTFLÄCHE



Validierung Pflanzenparameter

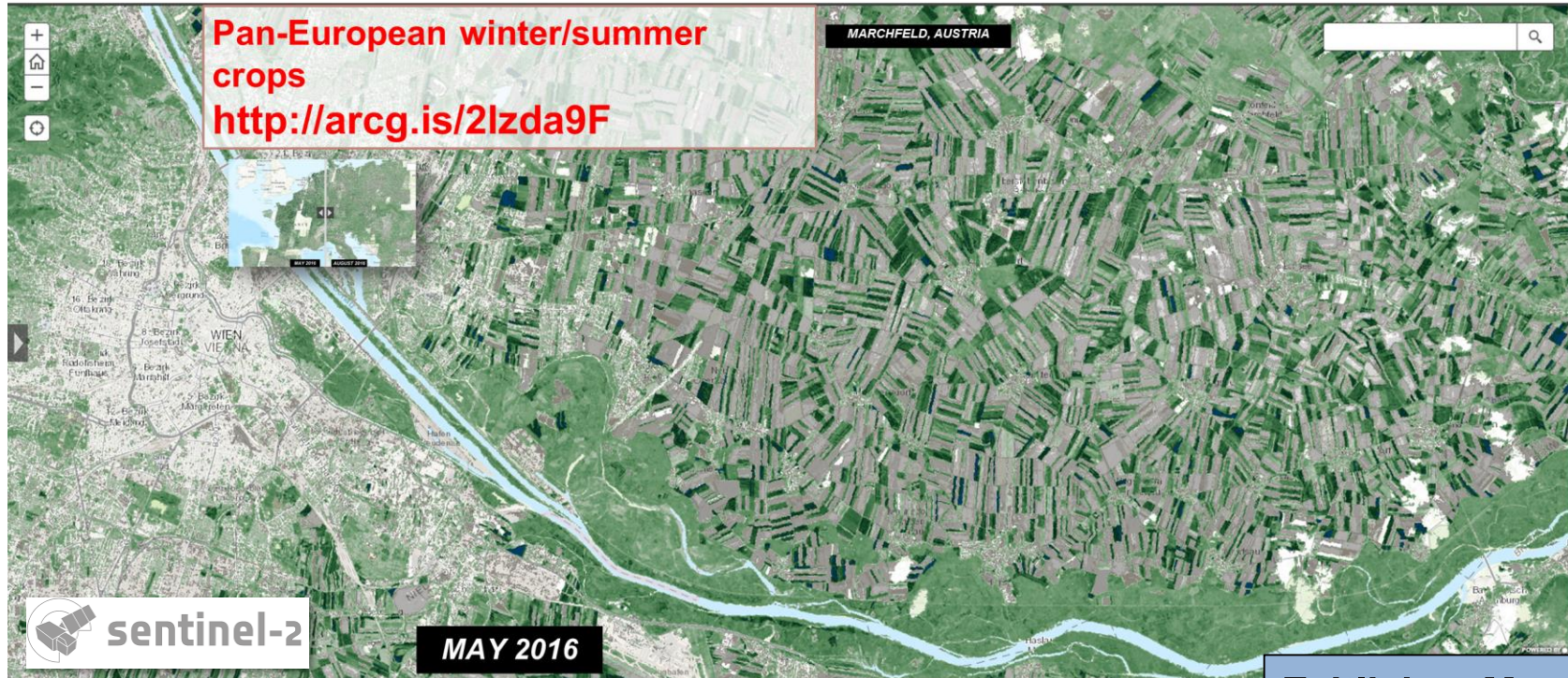
SENTINEL-2 BIOMASSE UND BLATTFLÄCHE



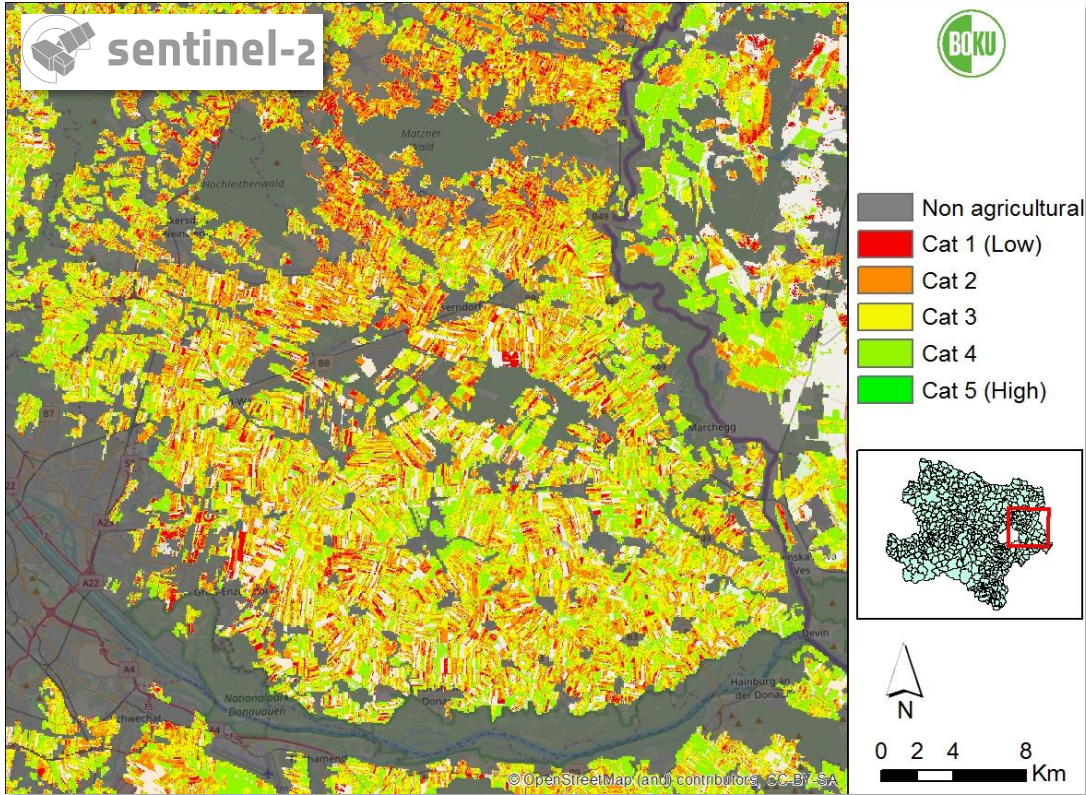
Zeitliches Monitoring

SENTINEL-2 BIOMASSE UND BLATTFLÄCHE

BUNDESMINISTERIUM
FÜR NACHHALTIGKEIT
UND TOURISMUS

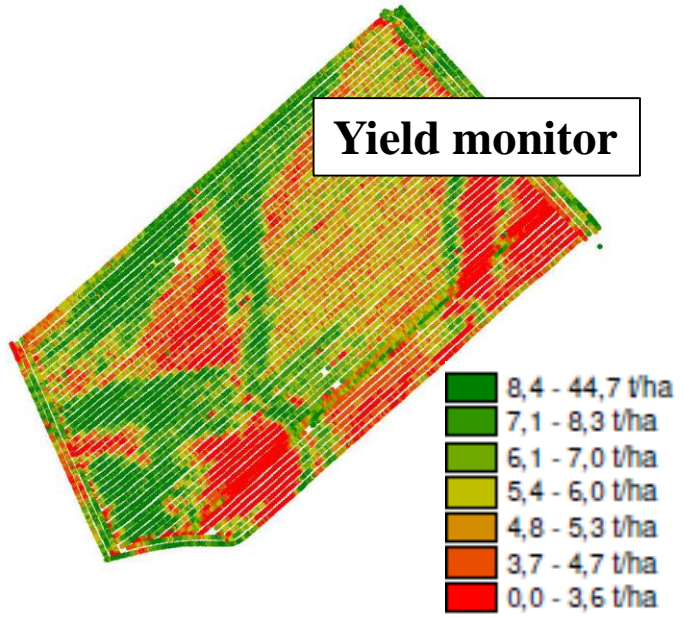
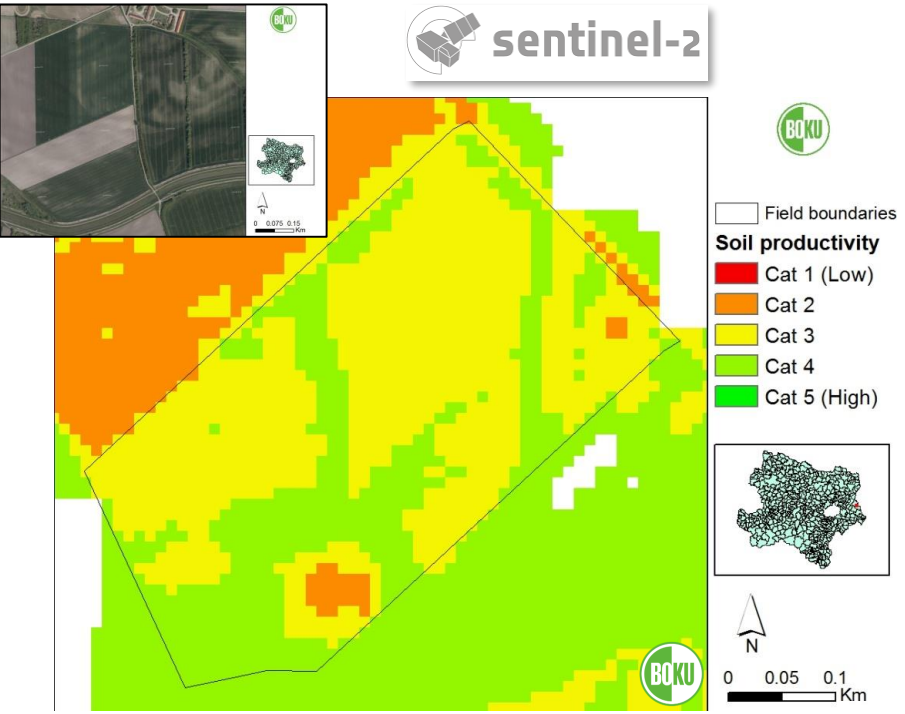


SENTINEL-2 BODENFRUCHTBARKEIT



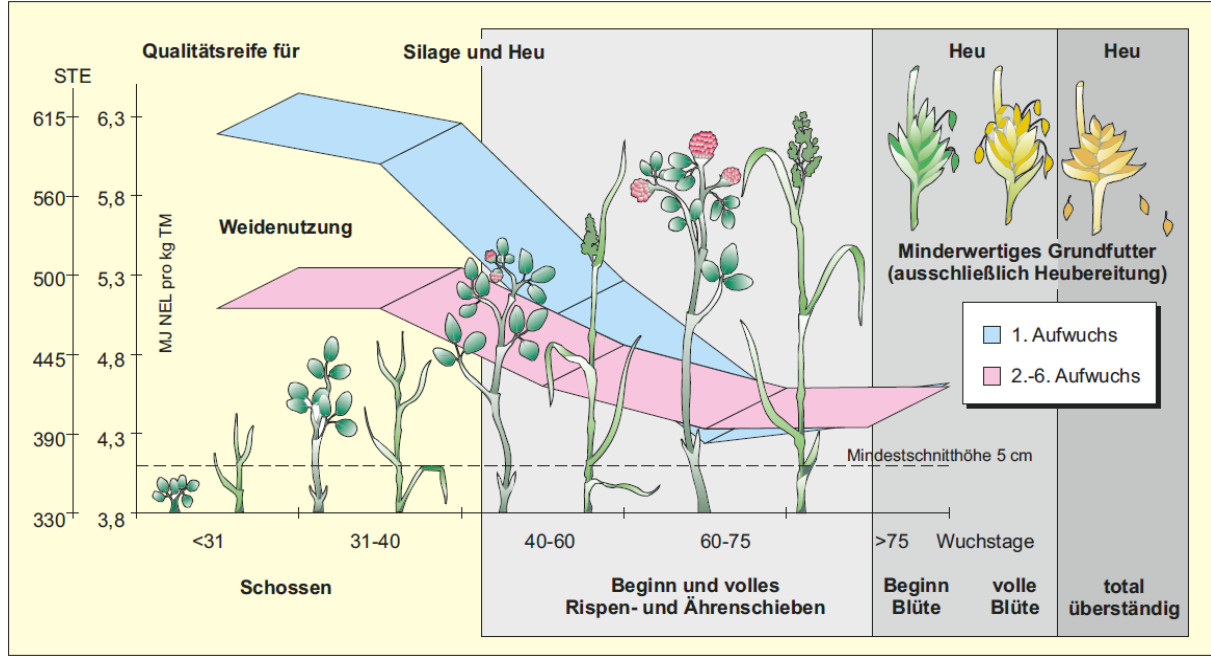
Produktivität großräumig

SENTINEL-2 BODENFRUCHTBARKEIT



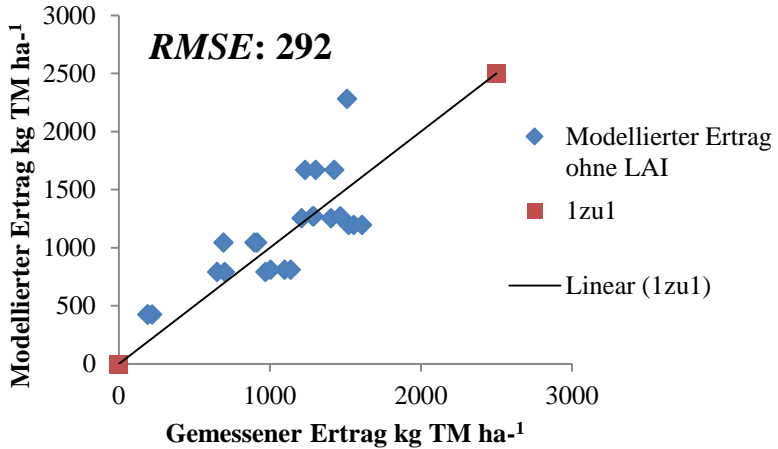
Validierung Produktivität

SENTINEL-2 GRASSLAND-MONITORING

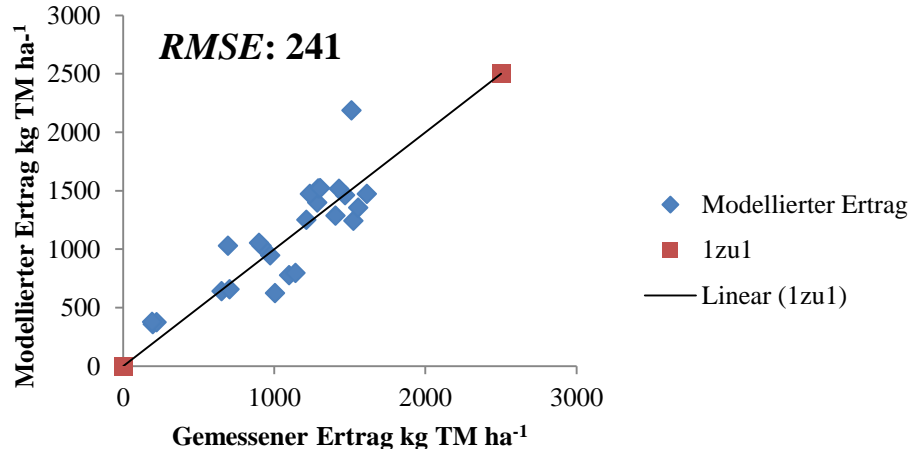


Optimale Schnittzeitpunkte

3. Aufwuchs ohne LAI



3. Aufwuchs mit LAI

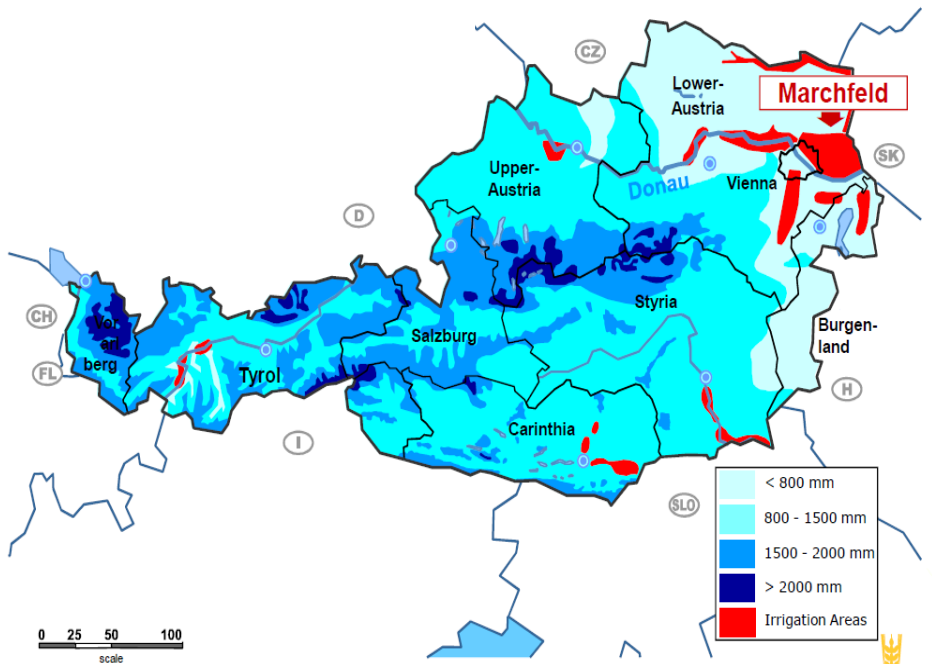


Optimale Schnittzeitpunkte

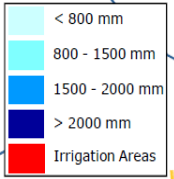
SENTINEL-2 BEWÄSSERUNGSMANAGEMENT

BUNDESMINISTERIUM
FÜR NACHHALTIGKEIT
UND TOURISMUS

Marchfeldkanal



0 25 50 100
scale



Irrigation practices - Marchfeld



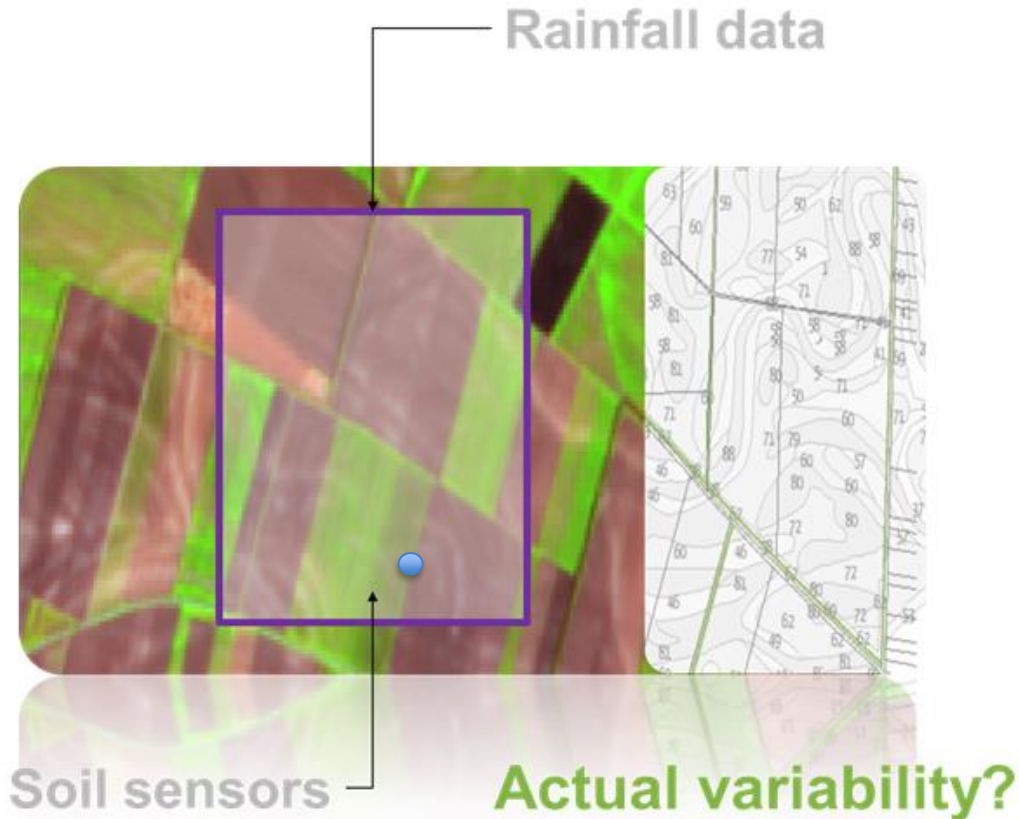
Millionen m³/Jahr



Wasserproblematik

SENTINEL-2 BEWÄSSERUNGSMANAGEMENT


BUNDESMINISTERIUM
FÜR NACHHALTIGKEIT
UND TOURISMUS





**Satelliten liefern aktuelle, detaillierte
und flächendeckende Informationen**


SENTINEL-2 BEWÄSSERUNGSMANAGEMENT


BUNDESMINISTERIUM
FÜR NACHHALTIGKEIT
UND TOURISMUS




Beregnungsplan.at


 eAMA
Feldimport

 Meine Felder

 Bewässerung


Hausacker

HAUSACKER
BILANZ KW 27
PROGNOSE KW 28




WASSERBILANZ KW27


40	22
VERDUNSTUNG	REGEN & BEWÄSSERUNG



BEWÄSSERUNGSBEDARF AKTUELL: 18 MM

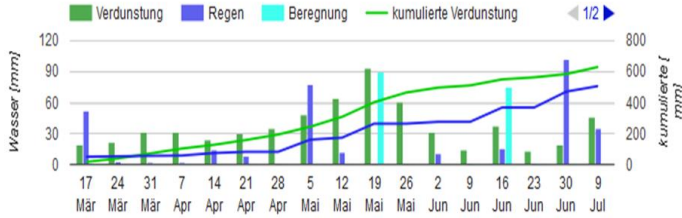





25 MM



5 MM

WASSERBILANZ SEIT AUSSAAT
SEIT AUSSAAT



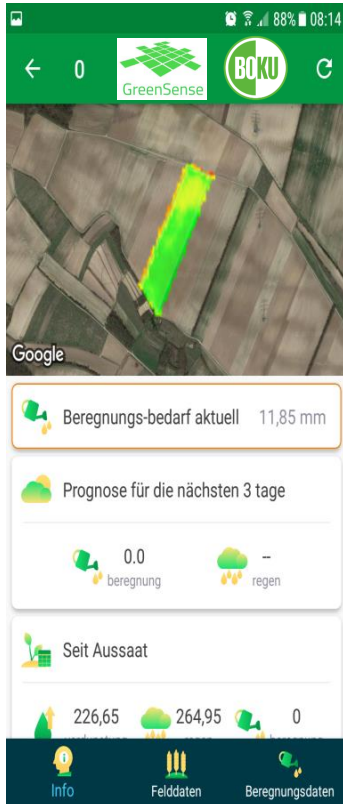
 125 mm
 55 mm
 45 mm

Hausacker
RWA – Raiffeisen Ware Austria Aktiengesellschaft | A-1100 Wien, Wienerbergstraße 3 | Tel.: +43 1 60515 0

Web-tool

SENTINEL-2 BEWÄSSERUNGSMANAGEMENT

BUNDESMINISTERIUM
FÜR NACHHALTIGKEIT
UND TOURISMUS



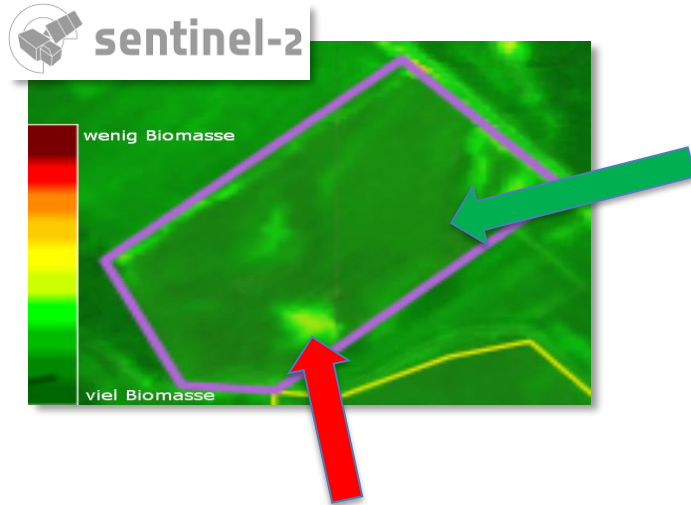
... Bewässerungsbedarf, täglich auf dem Handy

Live demo : water.greensense.at



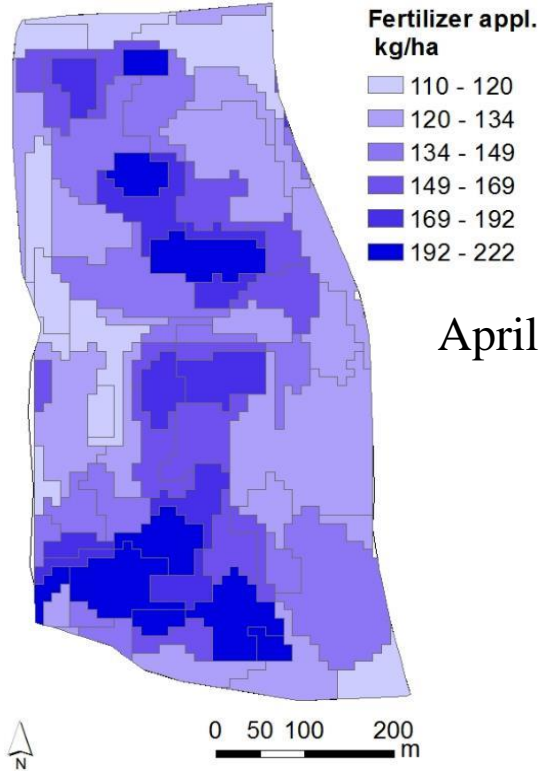
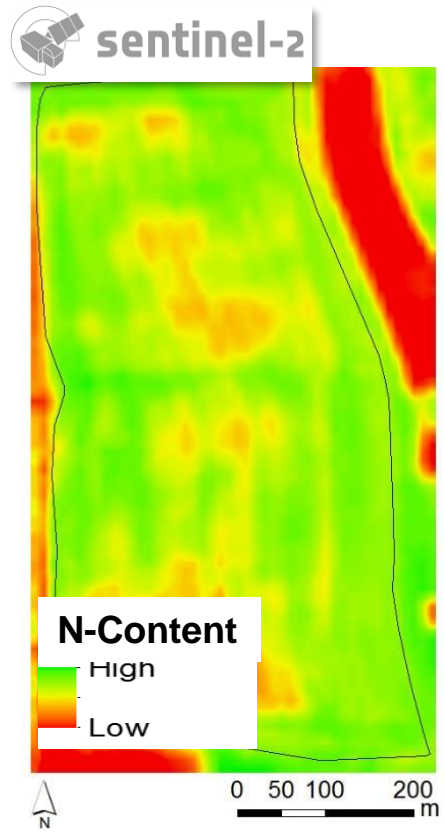
Web-tool

SENTINEL-2 N-DÜNGUNG



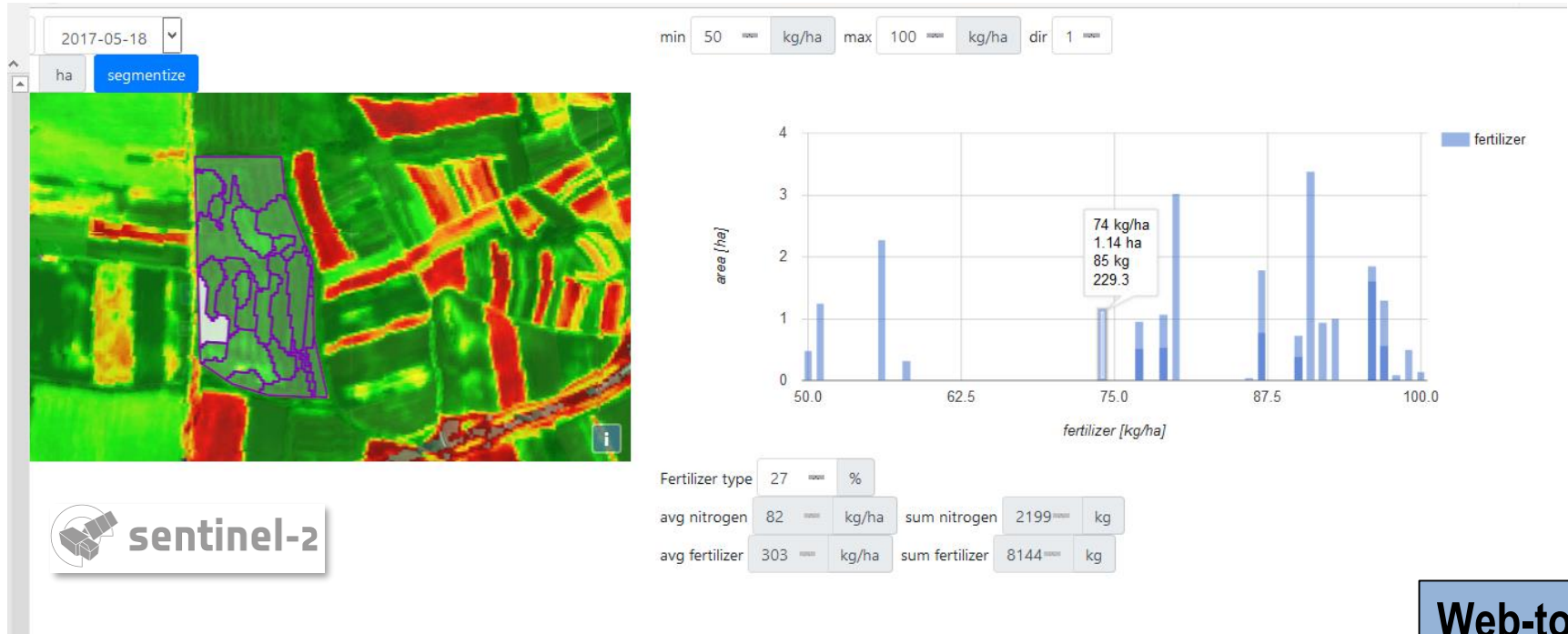
Erfassung & Charakterisierung von Problemzonen

SENTINEL-2 N-DÜNGUNG



April 26th 2017

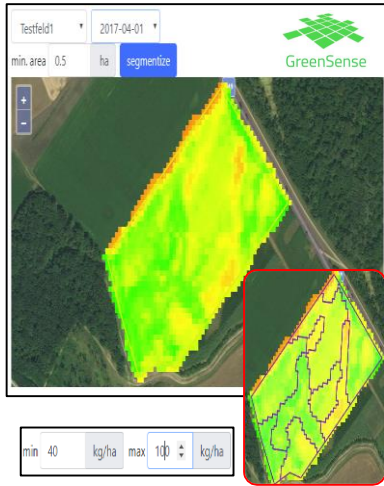
N-Applikationskarte



Web-tool

SENTINEL-2 N-DÜNGUNG

BUNDESMINISTERIUM
FÜR NACHHALTIGKEIT
UND TOURISMUS



No	Area	Fertilizer Rate	Fertilizer	Nitrogen
1	0.3 ha	40 kg/ha	12 kg	6 kg
2	0.35 ha	47 kg/ha	16 kg	8 kg
3	2.17 ha	87 kg/ha	189 kg	94 kg

avg nitrogen	77 kg/ha	sum nitrogen	1191 kg
avg fertilizer	154 kg/ha	sum fertilizer	2382 kg

CSV Excel SHP

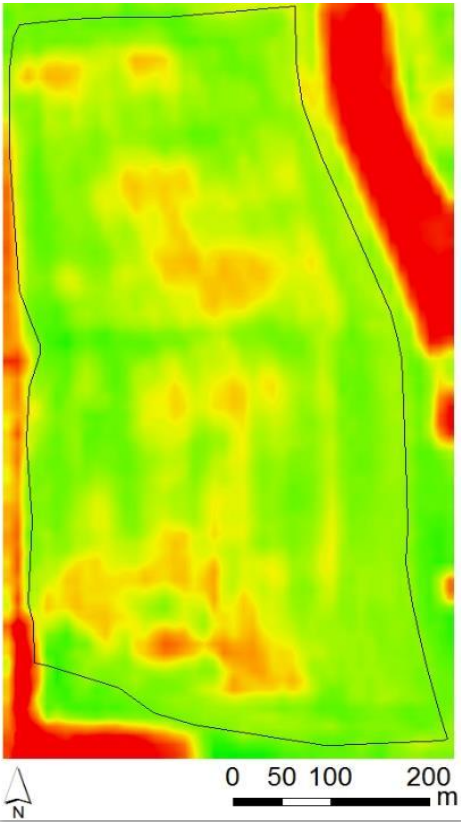
... Düngempfehlung auf Handy & maschinenlesbar

Live demo: nitrogen.greensense.at

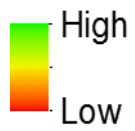


Web-tool

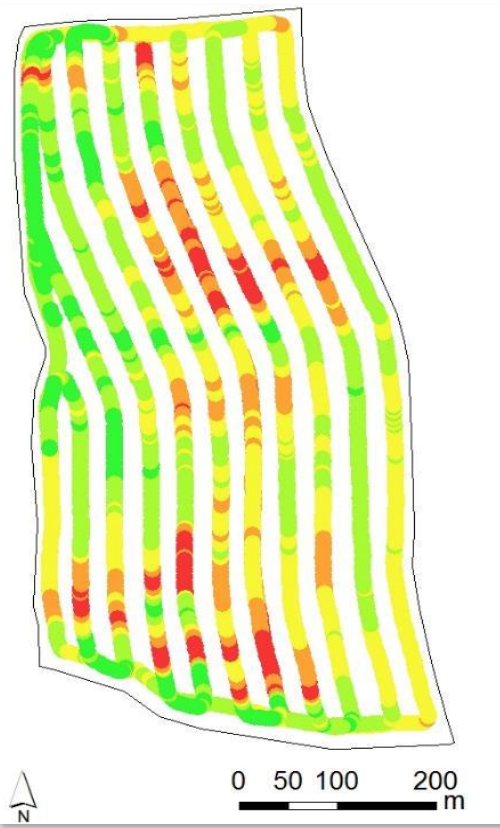
SENTINEL-2 N-DÜNGUNG



Proxy Biomass



- flächendeckend !**
- skalierbar !**
- kosteneffizient !**



DANKE !

*Herzlichen Dank an BOKU Mitarbeiter sowie
Josephinum, Raumberg-Gumpenstein, GreenSense,
F. Vuolo, L. Essl, M. Immitzer, A. Klingler, P. Riegler-
Nurscher, ... Förderung: FWF, H2020*

CONTACT

**University of Natural Resources
and Life Sciences, Vienna, Austria**

**Department of Landscape, Spatial
and Infrastructure Sciences**

Institute of Surveying, Remote Sensing
and Land Information

Univ.-Prof. Dr. Clement ATZBERGER

Peter Jordanstraße 82, A-1190 Vienna, Austria
Tel.: +43 1 47654-85701

clement.atzberger@boku.ac.at

<http://ivfl-info.boku.ac.at/index.php/homepage>